

Recently Awarded Contracts

Route A, Clay County
Contract Amount \$1.4M

KCI Rehab RWY 1R-19L
Contract Amount \$18M

Route 116, Caldwell & Clinton Counties
Contract Amount \$1.9M

Route I-70, Cooper County (Sub)
Contract Amount: \$225K

Route 435, Clay County
Contract Amount = \$9.9

Route I-35, Johnson County
Contract Amount = \$15.7

Route 69 Johnson County
Contract Amount = \$715K

Route 73 Leavenworth County
Contract Amount = \$902K

Route 69 Wyandotte County
Contract Amount = \$857K

Current Projects

Sedalia Airport
Contract Amount: \$3.3M

City of Independence MO
Contract Amount: \$3.7M

Shoal Creek Parkway
Contract Amount: \$2.4M

Wheeler Airport Rehab
Contract Amount: \$4.7M

Route 59, Holt County
Contract Amount: \$163K

Tiffany Springs Parkway
Contract Amount: \$2.2M

Route D, Cass County
Contract Amount: \$739K

Resurface KC Streets 14-1
Contract Amount: \$2.9M

Shoppes at Kearney
Contract Amount: \$321K

Route 33, Clay County
Contract Amount: \$2.3M

**KC Downtown Streetcar Project
(Demolition Subcontractor)**
Contract Amount = \$300K

Route I-29, Atchison County (Sub)
Contract Amount: \$58K

Route 69, 1, 9, Clay County
Contract Amount: \$4.7M

Route YY, Cass County
Contract Amount: \$716K

Route 350, Jackson County
Contract Amount: \$2.9M

Route 169, Miami County, KS
Contract Amount: \$397K

16th & Duncan, St. Joseph School District
Contract Amount: \$1.1M

Tarkio Airport
Contract Amount: \$294K

Route 210, Clay County
Contract Amount: \$15.2M

Route 1-35, Clay County
Contract Amount: \$2.9M



Ideker INK

Third Edition, December 2014

Welcome to Ideker INK, our annual newsletter. It contains articles that update you on what's new at Ideker Inc, our accomplishments, some of our people, industry news, and our plans for the future. We hope Ideker INK will be of interest to our customers, vendors, friends, and primarily to all the dedicated men and women who work for Ideker giving it their all each and every day.

In This Issue

Wheeler Airport Projects Conclude
Crews complete last phase ahead of schedule

I-70 Dickinson County
Ideker achieves bonus for quality, smoothness, & meeting the accelerated schedule

Current & Recently Awarded Projects

Employee Profile
Get to know 3 of Ideker's key personnel

Ideker wins 2 National Paving Awards

Route 210 Clay County
\$15M job completed in less than 9 months

I-35 Clay County
Ideker proves to MoDOT the benefits of the Fine Grind Shingle Process

Letter from President



4614 South 40th St.
St. Joseph, MO 64507



Newly paved taxiway at Wheeler Airport

Project Leadership

Project Manager
Mark Allegri

Project Superintendent
Mike Wilson

Concrete Paving Superintendent
Brandon Kendall

Asphalt Paving Superintendent
Brian Wood & Duke Diamond

Location
Downtown Kansas City, Missouri

Contract Amount
\$4.7M

Wheeler Airport Project History

2008-2009

Tee Hangar Complex Rehab
Mike Wilson

2009

Mill & Overlay Runway 3-21
Danny Holyfield

2010

South Taxi-lane Construction & EMAS
Danny Holyfield

2011

North Taxi-lane Construction & EMAS
Scott Lene

2011-2012

Golf & Kilo Taxilane Construction
Mike Wilson

2013

Sinkhole Pipe Repairs Phase 1
Bob Hamilton

2013

Sinkhole Pipe Repairs Phase 2
Randy Cox

2014

Golf & Juliet Taxilane Construction
Mike Wilson

Crews Wrap up Final Phase of Wheeler Airport Improvements

Airport Experience Proves Valuable and Crews Complete Project Ahead of Schedule

Ideker played a major role in the improvements made to Charles B. Wheeler Airport in Downtown Kansas City. Over the past seven years, crews have constructed various rehabilitation projects at the airfield, completing over \$32 million of work since 2007. Every crew and almost every employee has contributed to this effort over the past seven construction seasons. As of October 2014, all phases have been completed.

This year's project consisted of the complete removal and reconstruction of approximately 1,500 linear feet of the remaining Taxiway Golf & Juliet. Miscellaneous grading and pipework had to be completed to tie this final project into the new taxiways. In addition, numerous areas were milled and overlaid with 4" asphalt pavement.

The unique part of this final project was that it was bid with 5 main phases and several sub phases. Ideker management was able to re-invent the schedule, combine several phases and ultimately eliminate 32 calendar days from the schedule. Project Superintendent Mike Wilson, who managed several of the Wheeler projects, considers the working relationship with the airport personnel one of the biggest keys to success. "The relationships that project managers built over the years allowed us to gain trust and confidence needed for airport staff to approve our proposed schedule changes," Wilson stated.

Re-configuring the schedule and combining phases is not easy in most construction projects but especially difficult in this complex airfield setting. There are multiple challenges and an elevated risk for mistakes and safety failures. At one point, Ideker had 5 subcontractors and 3 crews working at once. "Tons of equipment, trucks, and people all being checked in, logged, and escorted in and out of where they were working all while the airfield was active.

It was critical that everyone knew exactly where they needed to be and kept to the plan," Wilson added. Even in this complex and sometimes intense environment,

Ideker crews maintained a perfect safety record with zero accidents in all the years working at Wheeler.

A lot of advanced planning was necessary along with daily meetings once the project began. "Our field crew led by Mike Wilson did an excellent job in all this coordination. Mark Allegri worked on the schedules daily to keep everyone in the loop and the airport functioning properly," Ideker's Vice President Cody Phillips stated.

Numerous Ideker personnel worked at Wheeler over the years. "I'm really proud of what we have accomplished over the past several years. I believe we have proven we are a competent and capable team that can handle the stresses and complexities of working in any conditions," Phillips added.



Awards & Recognitions

Congratulations to Doug Farrier for the 2013 MVP award and Brandon Kendall for the 2013 Heart of a Champion Award presented at the annual meeting in February 2014.

Missouri Asphalt Paving Association 2014

- Airport Paving - Wheeler Downtown Airport (2nd Place)
- Primary Route Under 50,000 tons - Route 69, 1 & 9 (1st Place)
- Minor Road Overlay - Route 33 (1st Place)
- Municipal Paving - City Streets KCMO (2nd Place)

Missouri/Kansas Chapter, ACPA, Excellence in Paving 2014

- Route 169 Highway & 108th Street (National ACPA Winner)
- Flintlock Road Overpass (National Gold Winner)
- Reliever & General Aviation Airports - Sedalia Regional Airport Runway 18-36
- Urban Arterials & Collectors - Route 210 Highway, Clay County
- Concrete Overlays (Highways) - I-70 Bonded Concrete Overlay project, Dickinson County



Adam Miljavic

Position: *Controller*

Years with Ideker: *1 year*

City of Residence: *St. Joseph, MO*

Spouse's name: *Amy*

Kid's names & ages: *Sydney Grace born on 11/22/14*

Motto: *Flexibility with Accountability*

Favorite movie: *Old School*

Favorite band: *Guns N'Roses*

Hobbies/Interests: *Playing and watching sports, doing anything outdoors, traveling, and spending time with family and friends*

Work experience/background: *9 years of public accounting: Ernst & Young (5) Mize Houser (2), Grant Thornton (2)*

Accomplishment I am most proud of or something people may not know about me: *Starting a family*



Robert Marz

Position: *Milling Crew Superintendent*

Years with Ideker: *9 months*

City of Residence: *Rolla, MO*

Spouse's name: *Brenda (Married in 1975)*

Kid's names & ages: *4 children (Heather - 38, Luke - 37, April - 36, and Chad - 35), 7 grandchildren, and 1 great grandchild*

Motto: *Treat people the way you would like to be treated.*

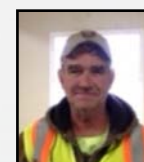
Favorite movie: *Son-in-Law*

Favorite band: *Alison Krauss*

Hobbies/Interests: *Spending time with my grandkids*

Work experience/background: *Jefferson Asphalt, Gaines Construction (4 years) and most recently N.B. West (3 years)*

Accomplishment I am most proud of or something people may not know about me: *With the help of 3 other men, I built my own two-story farmhouse in 2003. We built the 4,500 square foot house in 54 days.*



Rocky Cain

Position: *Concrete Plant Manager/Operator*

Years with Ideker: *23 years*

City of Residence: *Eagleville, MO*

Motto: *If you work hard, you will stay ahead in life*

Favorite movie: *Hatfield and McCoy's*

Favorite band: *George Strait*

Hobbies/Interests: *hunting & fishing (anything outdoors)*

Work experience/background: *Central Paving (11 years) pumping the cement and operating the concrete plant. Koss Construction (1 year) before coming to Ideker.*

Accomplishment I am most proud of: *Most proud of the fact that I am financially stable and never had to borrow any money.*

I-70 Project in Abilene Finishes Strong

The extensive two-year reconstruction proved to be a successful one for the Ideker team. This year, crews continued their work on the westbound lanes of I-70 in Central Kansas. The project was located just east of Salina and on the west end of Abilene. It consisted of 16 lane miles of a variable depth concrete mill and a 3.5" bonded concrete overlay on the



existing pavement. This was the first overlay of its kind in the state of Kansas and the first concrete overlay less than 4 inches in thickness in the entire Midwest on a Major Interstate.

Using their stringless technology, Ideker was able to optimize the roadway profile and correct several areas to meet current design standards. The crew ultimately placed a variable depth concrete overlay in lieu of the design 3.5" thick overlay, creating thickness in some areas up to 7 inches.

This year KDOT requested an accelerated schedule regarding the ramp interchanges. Ideker was able to construct each ramp in 6 weeks or less unlike the original contract that would have allowed the interchanges to be closed the duration of the project. Bonus compensation was awarded for the accelerated work as well as for smoothness and thickness of the concrete roadway.



Project Leadership

Project Manager
Cody Phillips

Project Superintendent & Water Pollution Control Manager
Scott Lene

Concrete Paving Superintendent
Brandon Kendall

Milling Crew Superintendent
Robert Marz

QC Manager
Adam Brooks

Contract Amount
\$20.1M

Accelerated 210 Project Completed on Time

One of Ideker's major projects this year was the widening of Route 210 just east of I-435 near Ameristar Casino. The \$15.5 million accelerated project eased the commute for nearly 14K travelers each day in an area that is continuing to grow.

This project consisted of constructing five miles of two new lanes on 210 between the 435 Loop and 291 Highway. Route 210 was a two-lane highway and is now a four-lane divided highway.

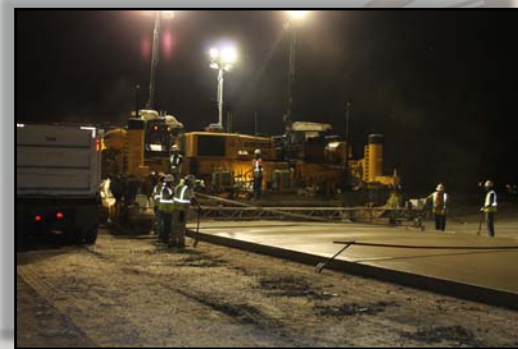
Night and double shifts were required in order to meet the contractual obligation to complete the project in less than nine months.

Rehabilitation of three existing bridges as well as the new construction of one bridge was also included in the project scope. All of the bridges that were constructed or rehabilitated were bridges over existing railroad tracks, which added to the need for an accelerated schedule.

The project required 350,000 cubic yards of roadway embankment that was obtained

offsite. On certain days, crews were hauling 7,000 cubic yards of dirt in 24 hours. The crews worked double shifts for part of the spring and summer in order to complete the embankment on time. "Working at night is tough, but due to the amount of traffic in this area and the accelerated timeline, we were able to get more done during the night shift" Project Superintendent Danny Holyfield commented.

"This project had many critical points. The Superintendent and Foremen did an excellent job managing this and getting the work done on time." Project Manager Cody Phillips stated.



Night work was common this season due to the accelerated schedules and job requirements.

Safety Corner

By Rusty Thielmann

Safety

We had a good year with regards to our safety record. Please continue to take the steps necessary to complete the jobs safely while being mindful of all the possible hazards.

Security

We continue to learn that criminals are willing to take greater risks each and every day. We need to assume that our job sites are being scouted out by thieves and the securing of our tools, equipment and vehicles is of the greatest importance.

DOT compliance

This is an area that we continue to improve in. Having a clear understanding of the rules is the first step to having a safe commercial vehicle fleet. All of our CDL drivers need to inspect their vehicles daily and correct any deficiencies before operating. This is a part of our business that should be taken very seriously. Not just for the sake of our drivers, but for the safety of all those who travel our public roadways.

Thank you for your hard work and continued focus on safety!

Mosby Quarry Turns One

Ideker's new rock quarry located just north of U.S. 69 in Mosby, Missouri completed its first full year of production.

The 125-acre operation provides limestone to projects in the Kansas City Metro area. Ideker opened the quarry in November 2013 to supply rock for internally sourced projects, other contractors, as well as the general public. The quarry supplies numerous rock gradations for the asphalt plant and also produces County Road rock



and base rock for public and private use. The proximity of the quarry to the asphalt plant gives Ideker a competitive advantage. The company realized the value immediately when bidding jobs north of the river.

Plans to invest in some new equipment will allow the plant to produce at even greater levels to satisfy demand. Ideker expects to produce at full capacity next construction season.

Project Leadership

Project Manager
Cody Phillips

Project Superintendent
Danny Holyfield

Concrete Paving Superintendent
Brandon Kendall

Base Foreman
Jerry Holstein

Quality Manager
Chance Hollingsworth

Ideker Projects Win National ACPA Awards

This year was extra special when Ideker was honored with TWO national awards for their work on Route 169 Highway & 108th Street and Flintlock Road Overpass of I-35 in Clay County, Missouri. The company won the American Concrete Pavement Association (ACPA) awards at the local chapter level, which qualified them for the national awards. The ACPA awards program recognizes contractors who completed outstanding projects with high-quality workmanship and whose efforts yield the best pavement in airports, highways, and road applications. Ideker was recognized during the 51st Annual Excellence in Concrete Paving Awards Program on December 5th, in Scottsdale, Arizona. Congratulations to Brandon Kendall, the concrete paving crew, and all who had involvement in these two projects!



108th Street overpass of I-35 in Clay County

Barbecue American Royal Style!

Team "Ideker-Que" participated in the open barbecue contest on October 3-5, 2014! Employees stopped by for samples and to support the team. Thanks to Mark Allegri, Kasey Gebbie, Danny Holyfield, Teresa Rooding, and Daniel Allegri for making it happen. They didn't win but had a fun weekend. Better luck next year!



The cooks from left to right - Mark Allegri, Danny Holyfield, and Kasey Gebbie

2nd Annual Clay Pigeon Shootout

Employees got to enjoy some team building and friendly competition in a clay target shootout at the Ideker farm in Craig, Missouri last spring. The winning team was "The Woodcock's" (Brian Wood & Randy Cox)



Sedalia Airport Runway Reconstruction

The \$3.2M Sedalia Regional Airport project began in late June and was completed in late November. The reconstruction of Runway 18-36 included complete demolition of the existing 8-inch concrete runway and recycling this material for base rock. In addition, the project had 100,000 cubic yards of earthwork as well as lime treated subgrade under the new runway. The new runway consists of 60,000 square yards of 8 inches PCCP on top of 6 inches of the recycled pavement used for base rock making for an extremely smooth and durable runway. By using this method, the airport can now accept aircraft up to 60,000 pounds, 12,000 pounds greater than their previous runway.

Ideker chose to rent a portable crusher for the recycling process and were very successful in doing so. No base rock material was required to be hauled in from an aggregate supplier and the sub base was 100% a recycled product. "This was environmentally friendly as well as cost effective. We were able to beat our estimated costs for this activity and maintain the project schedule," Project Manager Cody Phillips stated.

The runway is also now one of the smoothest runways with the average Profile Index for the project at 0.32 inches per mile with a 0.2' blanking band. Besides the on-site concrete plant, which allowed for minimal starting and stopping, Ideker's excellent paving crew and the solid, thick subgrade were just a few factors that contributed to this achievement. The crew paved four mainline runway stretches in just four days at an impressive rate of 5,200 linear feet and an average of 3,250 cubic yards per day.



Project Leadership

Project Superintendent
Scott Lene

Concrete Paving Superintendent
Brandon Kendall

Quality Control Manager
Adam Brooks

Location
Sedalia, Missouri

KCI Runway Rehabilitation



In June, Ideker was awarded the Rehabilitation of KCI Runway 1-R 19L project that will begin Spring of 2015. Ideker is no stranger to airport jobs completing 13 airport projects in the past 5 years. The job consists of complete removal of the existing runway and rebuilding a new concrete runway. The contract amount is \$17.9 million.



From the President's Desk

Looking back on the past year, I always find it interesting what stands out in my mind. Sometimes it's the good things...winning a bid, getting a project completed on time and coming in under budget. Other times it's the bad things...narrowly missing a bid, re-work, being behind schedule and over budget. All of these aspects are important to reflect on to help us learn and grow as a company. Last year, like every year, brought about numerous challenges and I am extremely proud of how our entire team responded to these challenges. This newsletter barely scratches the surface of the tremendous accomplishments we achieved in 2015, but I feel it very important and entertaining to chronicle the events of the past season. I hope you enjoy reading it as much as I enjoyed living it.

So what's ahead in 2015? 2015 workload is shaping up. We have a decent backlog with a few upcoming opportunities that we feel confident we will be competitive on. We should all feel very proud of our ability to maintain our volume in this depressed economic state of our industry. Ideker has invested a substantial amount in equipment and technology to help ensure this competitiveness, but it is the employees of Ideker that ensure the success of the company. I often compare Ideker to a NFL football organization. From the general manager hiring the best people...to the coach having a good game plan...to the players executing on the field, every person is vital to our success of the organization. I feel we have an exceptional organization in place and I believe we are well positioned for whatever the market may bring.

Since Amendment 7 failed in August, MoDOT has unveiled their "325 System, Tough Choices Ahead" program. MoDOT's budget reduction will most definitely cause tough choices for us as well. It is now more imperative than ever that we do all we can do to stay competitive and keep costs as low as possible. It will also be important to stay attune with the funding issues of our industry. Do not be afraid to contact your legislators to voice your opinion. I will definitely keep everyone posted on how you can help.

I want to thank all of you for your ongoing commitment to our success and wish you all a happy, healthy and prosperous 2015. Be safe,

Paul Ideker



Part of the KCMO overlay project was milling and repaving neighborhood streets.

Kansas City, MO Overlay

The Kansas City Missouri Overlay project completed this year was a mill and asphalt overlay of several city streets north of the river and south of Liberty. Zona Rosa, Barry Road, Congress and several neighborhoods were milled

and resurfaced with asphalt pavement this summer into early fall. The contract required the work on the main roadways to be completed between the hours of 7:00 p.m. – 7:00 a.m. Neighborhood streets were paved during the daytime hours. The project was completed on time in October.

Route 350 - Raytown, Missouri

Construction on Route 350 in Raytown, Missouri, began in July and completed October 2014. The 7 mile stretch consisted of mill and overlay asphalt-paving work that was performed during the evening hours between 8:00 p.m. – 5:00 a.m. Crews remained on track even with the short window of production time. The job was a MoDOT pilot

project for highly modified Superpave oil mix design called Kraton. Kraton is a new type of asphalt binder that was developed to improve pavement durability and resistance to rutting. Although other contractors have had difficulties with this mix, Ideker said the mix performed well and with no major issues.



Work on Route 350 was completed during the night hours.



Milling on Route 210

Milling Crew Added to Asphalt Operations

This year Ideker added yet another operation to it's growing company. The \$1.4 million investment included two skid steers, box brooms, a water truck, and two high-performance Wirtgen milling machines. Even with all this new equipment, you can't overlook the most important component – the milling crew.

In early 2014, Ideker hired an experienced milling superintendent, Robert Marz from Rolla, Missouri and his top-notch milling crew. "Hiring Robert was a natural fit. He (and his crew) worked closely with our people and processes and brings years of experience," President Paul Ideker stated. Marz has worked for Ideker as a milling sub-contractor under N.B. West and Gaines Construction since 2009.

Marz does not just simply aim for production quotas. He has a philosophy that fits right in line with Ideker, "Safety and quality is the most important aspect of our work. My crew is dedicated...

striving to get the job done right the first time and I am proud of what we have accomplished this year," stated Marz.

Ideker made the decision to invest in a milling operation for several reasons. "The more we can control, the better off we are. From a scheduling and timing perspective, having an in-house crew makes for less downtime especially on accelerated mill and fill projects." Ideker commented.

Another advantage is to be able to manage the depth of the milling. "With these smarter machines, we can set the grade levels, which save us time, money and makes for a smoother roadway," Marz stated.

"We see asphalt as a continued growth area for our company and believe this investment in equipment and people will keep us one step ahead," Ideker added.

I-35 Project Demos Fine Grind Shingle

Finely ground shingles are the future in construction aggregate and the team at Ideker is on the leading edge.



Ideker's fine grind system produces more effective liquid AC to coat the aggregates.

This summer crews paved a new asphalt roadway on Interstate 35 between Liberty Drive and Parvin Road in Kansas City, Missouri. Portions of the 5 mile stretch were considered a trial project for the use of recycled asphalt shingles (RAS) utilized in a Superpave mix with modified oil. Currently, MoDOT does not allow contractors to incorporate RAS in all asphalt mixes for Missouri roads. However, MoDOT recently expressed interest in adding RAS to all mixes under tighter and more strenuous specifications. Ideker was able to gain approval to apply a percentage of RAS in the asphalt mix for this project. More importantly, Ideker was able to demo their new Fine Grind System and prove value of the mix. Typically a state specification will call for the RAS to be ground to 3/8 inch. Jack Neel and the asphalt team at Ideker have a shingle grinder that will produce RAS ground to a fine powder or approximately 1/10 inch without adding any water. The system allows for a mix with lower moisture

content as well as real time adjustments to the Asphalt Cement (AC) content. "Essentially, we get more effective oil out of fine grind making it a more cost effective way to produce asphalt" Neel stated. The end product met all met state requirements and matched the high quality found in other modified oil mixes. "This is the first step in gaining confidence from MoDOT and proving the value in this new technology," Paul Ideker added. "We are excited to see where we go from here."

A special welcome to those new to Ideker!

Brian Swan
Shop Mechanic

Robert Marz
Milling Crew Superintendent

Ryan Wilson
Assistant Superintendent

Mike Northington
South KC Asphalt Plant Operator

Asphalt Paving Leadership

Project Manager
Jack Neel

Asphalt Paving Superintendent
Brian Wood

Asphalt Paving Superintendent
Duke Diamond

Milling Superintendent
Robert Marz